

PROJECT BY



SEVENTH YASH , NR. KAUSHALAM RESIDENCY
OPP. POPULAR PARADISE, GOTA, A'BAD, GUJARAT 382481

☎ 82383 92750 ✉ seventhyash2021@gmail.com

🌐 www.seventhgroup.co.in

RERA REGISTER NO. : PR/GJ/AHMEDABAD/AHMEDABAD CITY/AUDA/RAA08871/030821

RERA WEBSITE : WWW.GUJRERA.GUJARAT.GOV.IN



SEVENTH YASH

2 BHK PREMIUM FLATS

THE BEAUTY OF HIGH-LIFE AWAITS

BE A HIGH FLYER

PREPARE TO FALL HEAD OVER HEELS
FROM A VERY GREAT HEIGHT

one of the most promising residential projects launched in recent time in Ahmedabad,

Sevanth Yash is a pure opportunity for buyers !

personifying practical architecture, the freehold development features sober and well - engineered apartment design to ensure maximum functionality and cost efficiency.



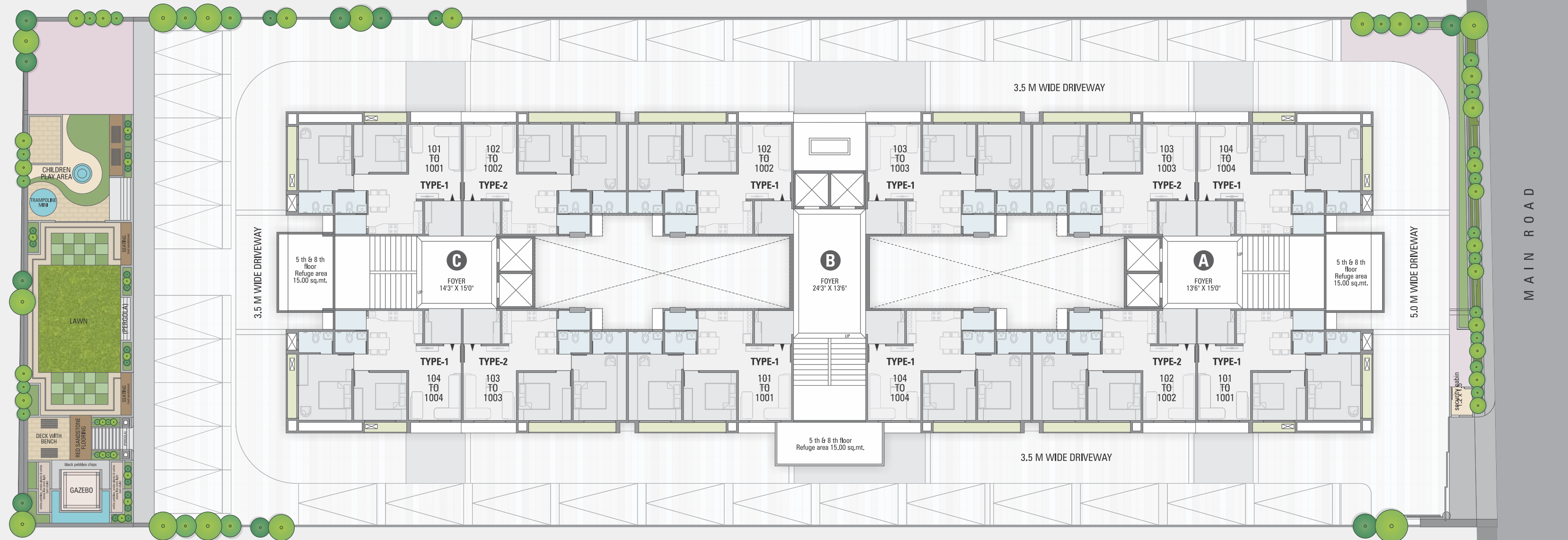
**SEVENTH
YASH**



LIVE WITH AESTHETIC EXCELLENCE &
LOCATION - SPACE - VALUE



GROUND FLOOR



Entrance Gate



CCTV Camera



Security Cabin



Lush Green Plantation



Power Backup System



2 Lift Each Block



Designer Gazebo



Senior Citizen Sit Out



Children Play Area



Fire Safety System



Meditation Room



Car Parking Space

REFRESHING AMBIENCE FOR BODY & SOUL

The breath-taking grandeur of these towers accustom a well-conceived and brilliant design concept.

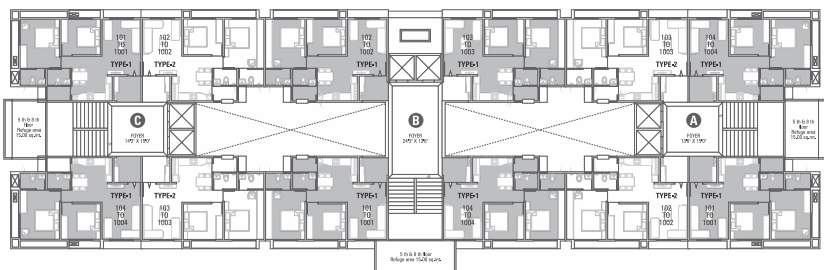
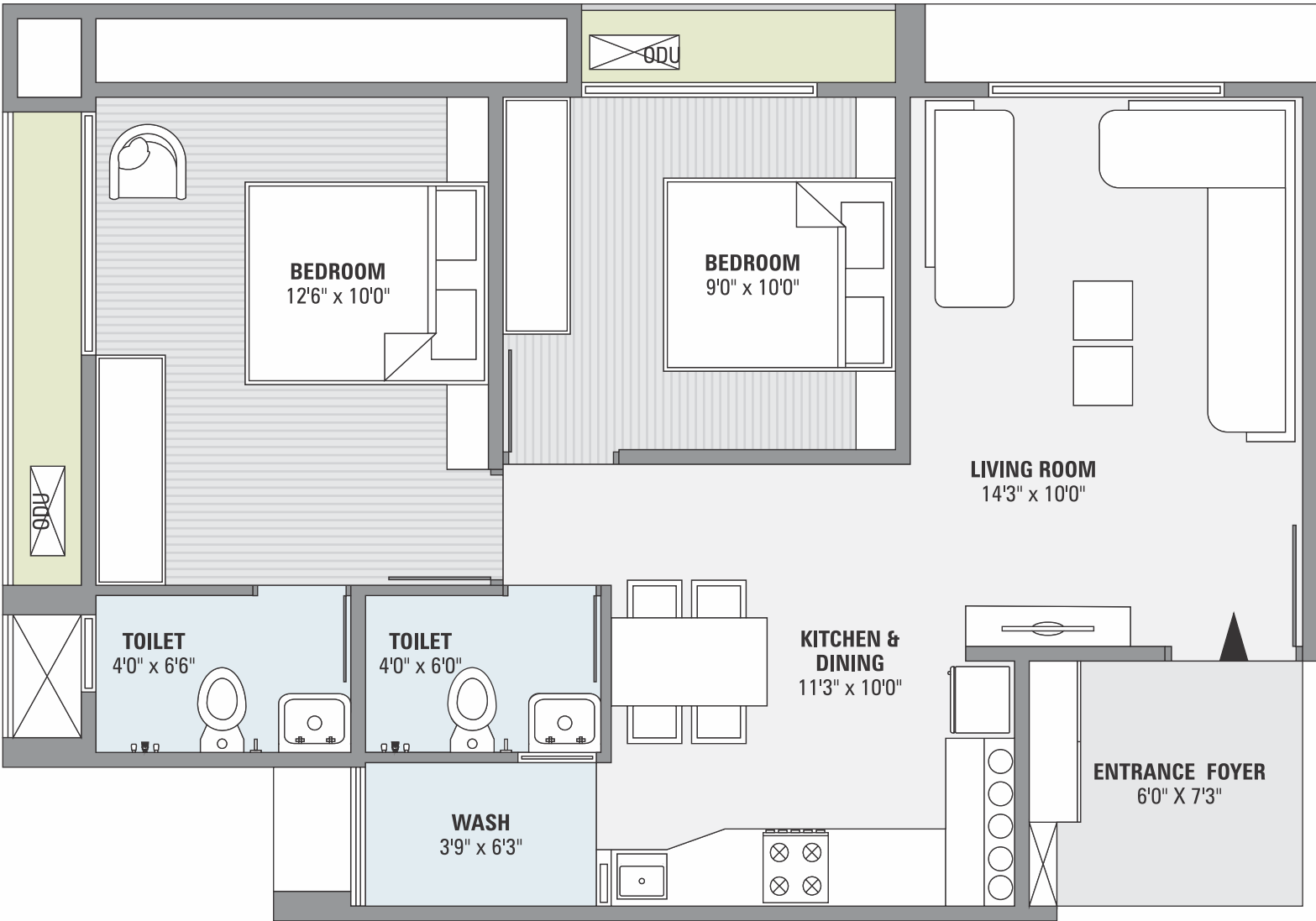
It is where art meets architecture to create a piece of appreciation.

Live large, live luxurious at Sevanth Yash

It is your own piece of paradise where all dreams are fulfilled and wishes are granted.

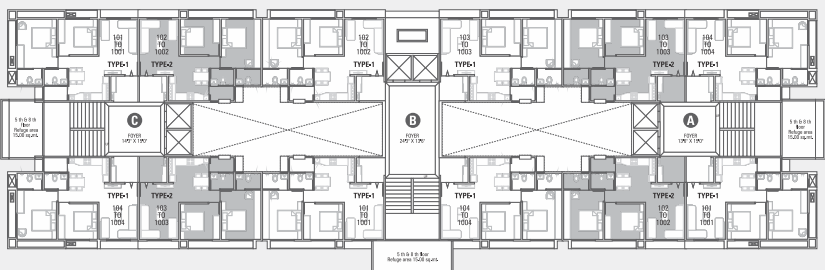
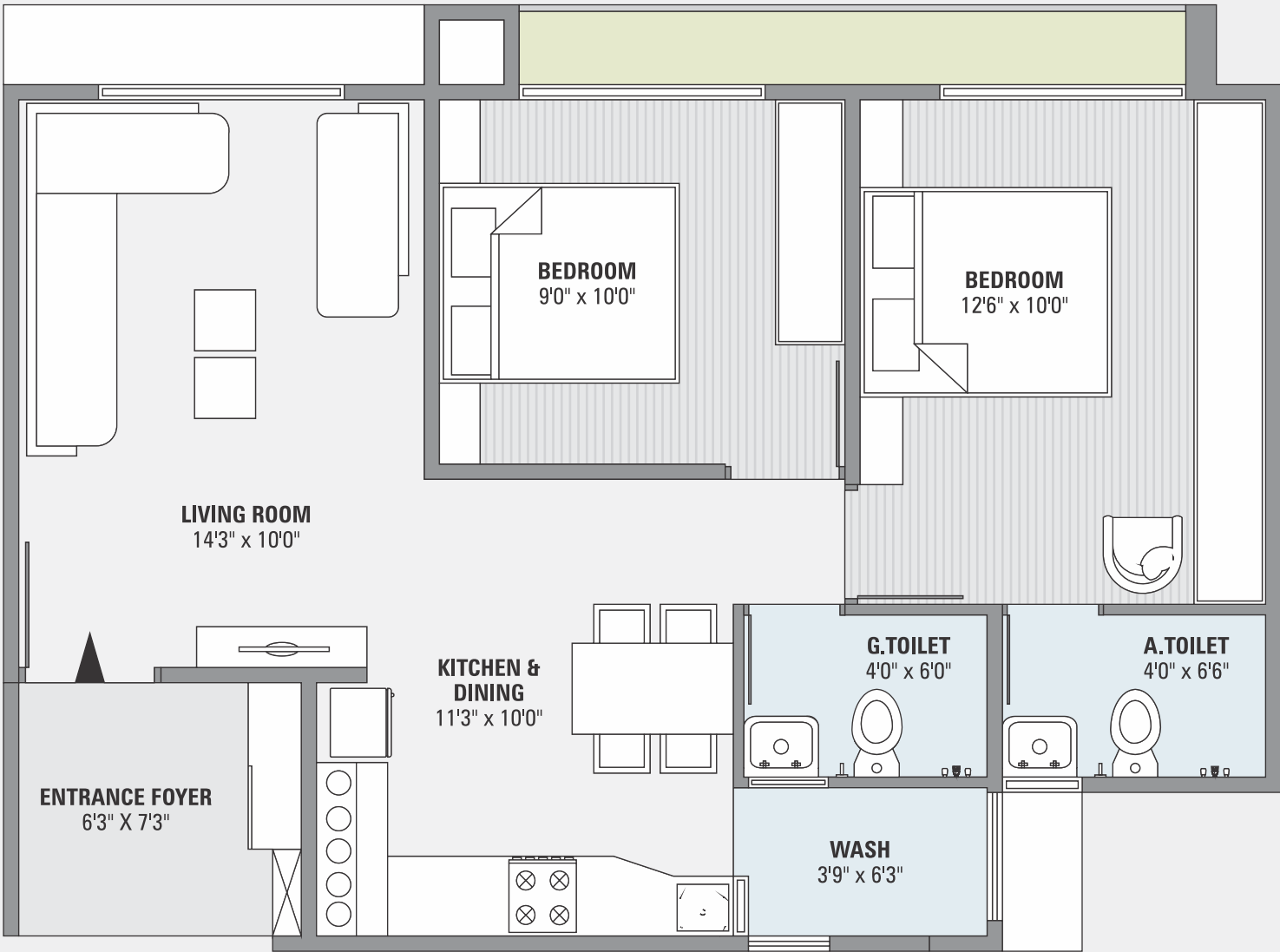
UNIT PLAN TYPE 1

CARPET AREA : 49.64 SQ. MTR
WASH AREA : 02.00 SQ. MTR



UNIT PLAN TYPE 2

CARPET AREA : 49.84 SQ. MTR
WASH AREA : 02.00 SQ. MTR



LUSH GREEN LANDSCAPE TO ENTICE YOU

A magnificent world called Shyam One15 that is effortlessly luxurious, quietly elegant and exclusively yours. It is a reflection of your dreams, desires, aspirations and choices. A true reflection of who you are. Live here and move closer to happiness. Sit back and enjoy the picturesque views of greenery all around. Let the lush beauty work its magic on you



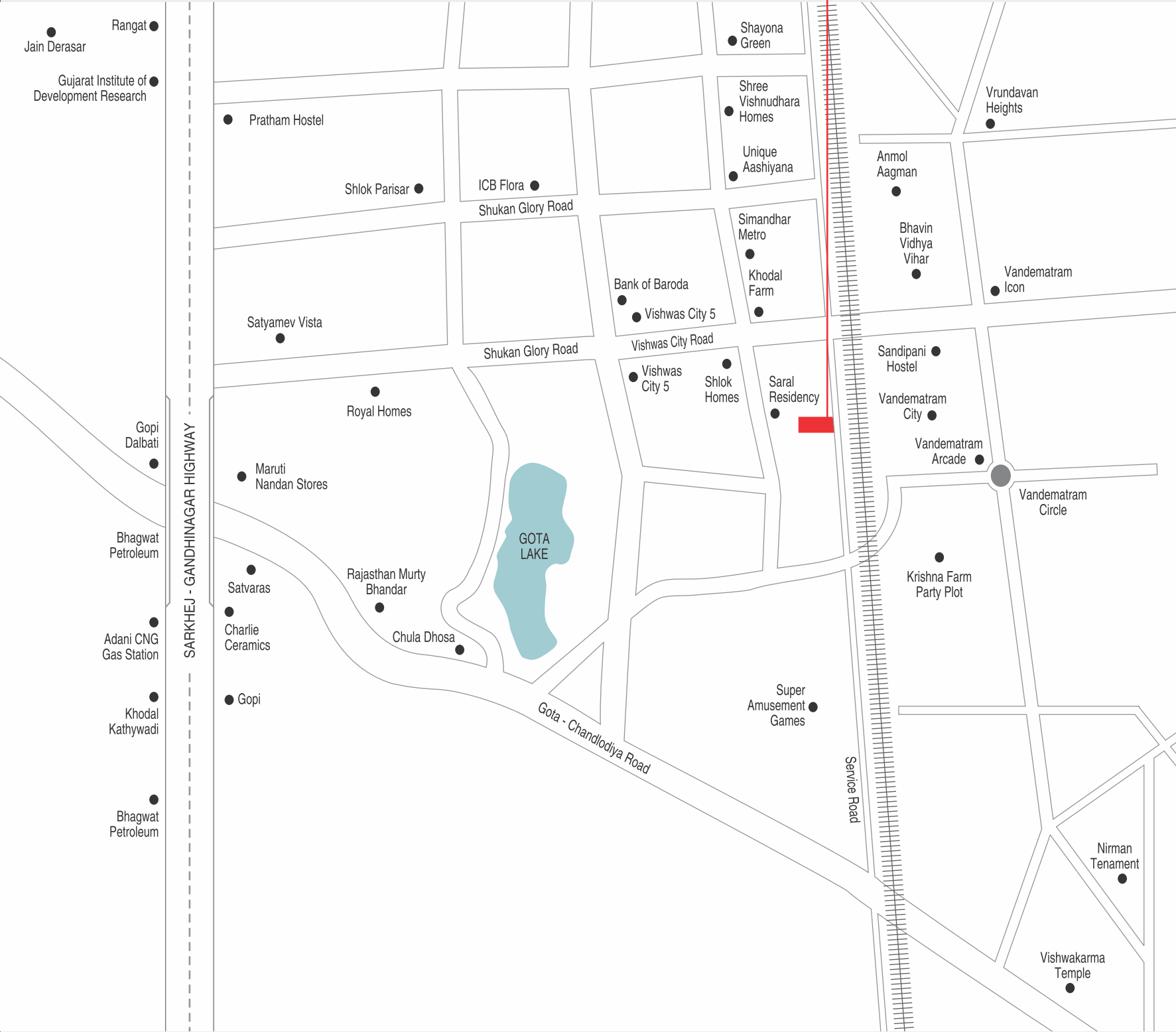
FANTASTIC AMENITIES FOR SENSATIONAL LIFESTYLE

Step out of your home and enter into the world of elite pleasure. With abundant luxuries and thoughtful amenities, your home is everything you wished for and more. Fun, fitness and relaxation is now a part of your everyday. Embrace fabulous way of living at Sevanth Yash.

SPECIFICATION

	STRUCTURE Earthquake resistant R.C.C. frame structure as per new by laws.
	FLOORING Vitrified tiles for entire flooring in all apartments.
	WALL FINISH / ELEVATION Internal mala plaster with white finish putty. Attractive external elevation with double coat sand face plaster.
	DOORS & WINDOWS Decorative main door & other flush doors with wooden frame. All windows in aluminum section with granite frame.
	KITCHEN Mirror polished granite platform with S.S. sink, designer glazed tiles up to lintel level.
	ELECTRIFICATION Branded ISI modular switches with concealed copper wiring and adequate number of points. MCB distribution panel.
	PLUMBING ISI CPVC and UPVC pipes for water supply, PVC & SWR pipes for solid waste and drainage systems.
	TOILET Designer tiles on floor and walls up to lintel level. Branded sanitary & bath fittings.
	TERRACE Brick-bat concrete with china mosaic for heat reflection and thermal insulation.
	FIRE SAFETY Fire Safety System Facilities

NOTE : • Commencement and timely execution of the project is subject to all necessary approvals from relevant govt. authorities, occurrence of natural calamities or any other external beyond developer’s control. • The dimensions shown in the brochure are approximate. • The developer reserves the right to change, revise or make any modification, addition, omission or alteration in the scheme as a whole or part thereof, at their sole discretion. • The brochure is only for illustration & private circulation purpose & is not a legal document or a binding one. • Government levies like stamp duty, registration charges, legal charges, GST and ant other additional charges are to be borne by the member. • Subject to Ahmedabad/ Gandhinagar Jurisdiction. • Payments in favour of "SEVANTH SPACE"



PROJECT BY

SEVENTH
SPACE

ARCHITECT


ASHISH PANCHAL
+91 816-0279863

STRUCTURE


NIKITA PARIKH
+91 99744 53555